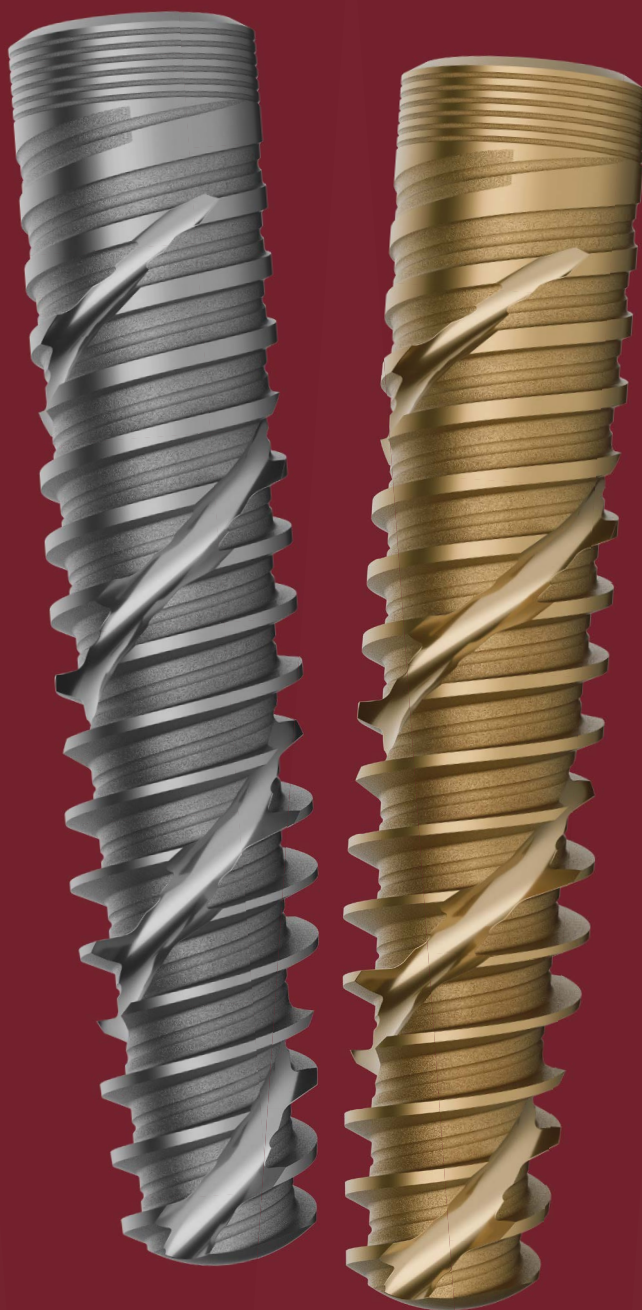


Epikut^s

LONG

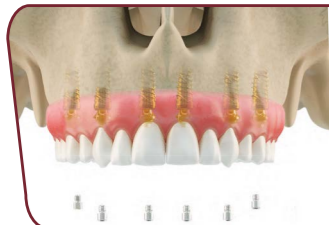
The new definition of epic



Epikut^S LONG

AN EPIC IMPLANT THE SIZE YOU NEED

In addition to the cutting, compressive design and double inverted support threads, the Epikut S Long Line brings more size options to facilitate the clinical day-to-day.



› An implant with diverse possibilities

The Epikut S Long line has 4 available lengths (18, 20, 22 and 24 mm), ideal for cases of full arch protocol in the maxilla.



› Agility and Predictability

Allows the rehabilitation of edentulous patients in a more straightforward and predictable way with the possibility of avoiding the need for grafts or sinus lifts.

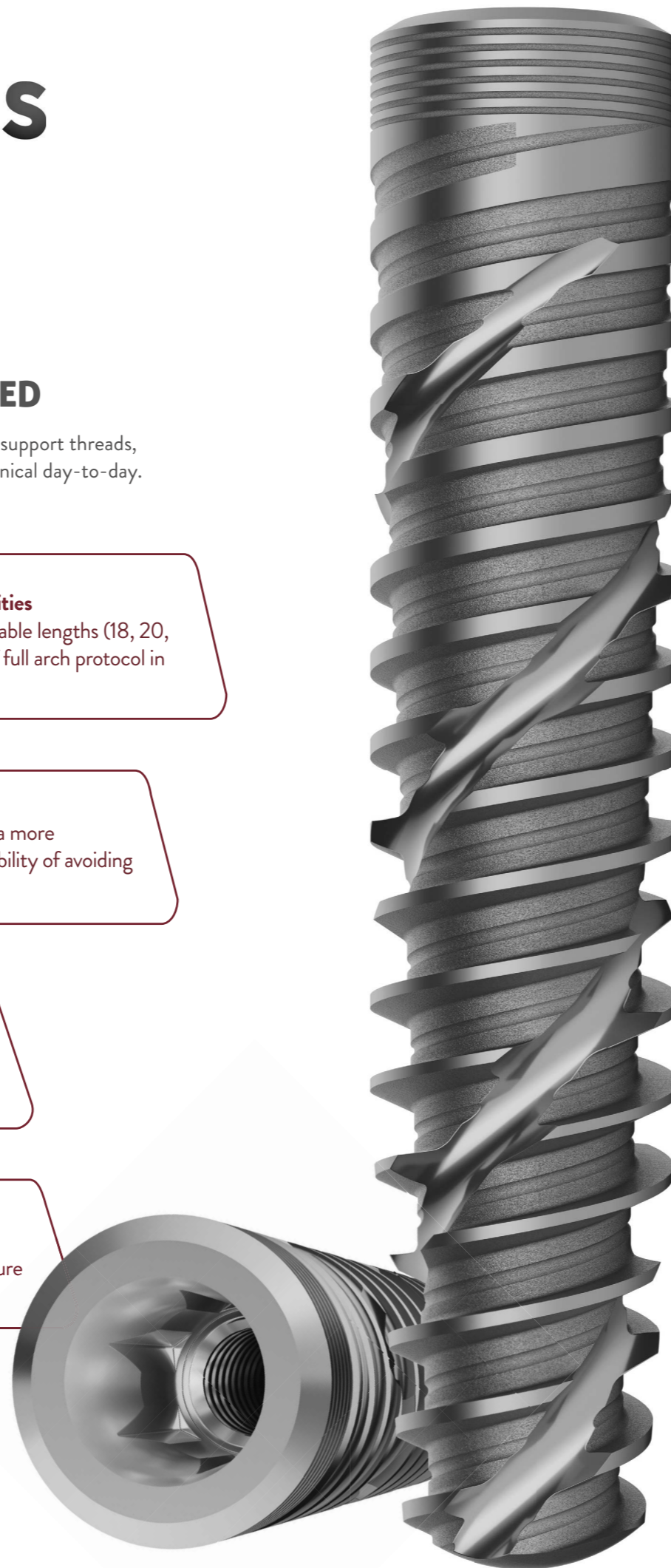


› Adaptation accuracy

With exclusive and high stress resistant prosthetic components.

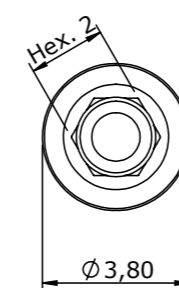


- › High predictability for immediate loading
- › Anchorage in atrophic maxilla
- › Case resolution in a single surgical procedure
- › Less patient morbidity

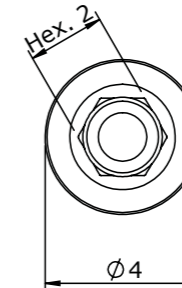


Technical measures **EPIKUT S LONG MORSE TAPER**

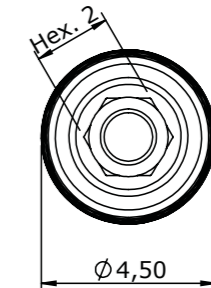
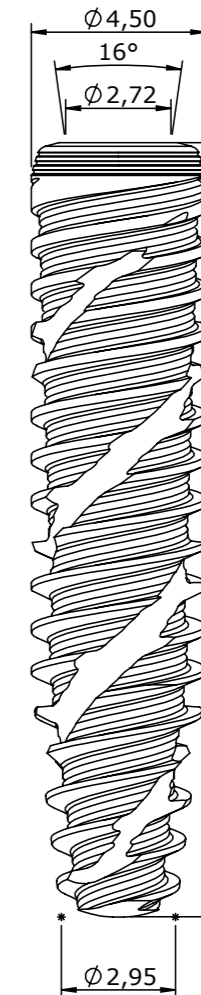
ILM 38xx
ILM 38xxN



ILM 40xx
ILM 40xxN



ILM 45xx
ILM 45xxN



18mm
20.0mm
22.0mm
24.0mm

INDICATIONS FOR CLINICAL USE:

- › 3.8 - Anterior region
- › 4.0 - Anterior and posterior region
- › 4.5 - Posterior region

MEET THE **GOLDEN STANDARD OF OSSEOINTEGRATION**

With Nanometric layer of hydroxyapatite crystals, the HAnano surface was developed in the main universities of Sweden and has been proven by over 50 preclinical studies.

THINNER

Nanometric layer of hydroxyapatite crystals.

FASTER

Better early bone growth and strength and anchoring of the implant.

STRONGER

Hydrophilic surface that accelerates the functions of osteoblasts, thus building more bone in less time.

Find out more on the surface Plus HAnano® by scanning the QR Code.



Scanning Electron Microscopy demonstrating osteoblastic cell on HAnano® surface. Courtesy: Cavalcanti JH, Tanaka M, Bezerra FJ, CBPF RJ.



EPIKUT LONG SURGICAL KIT

MAXIMUM FUNCTIONALITY AND SIMPLICITY FOR YOUR SURGERIES

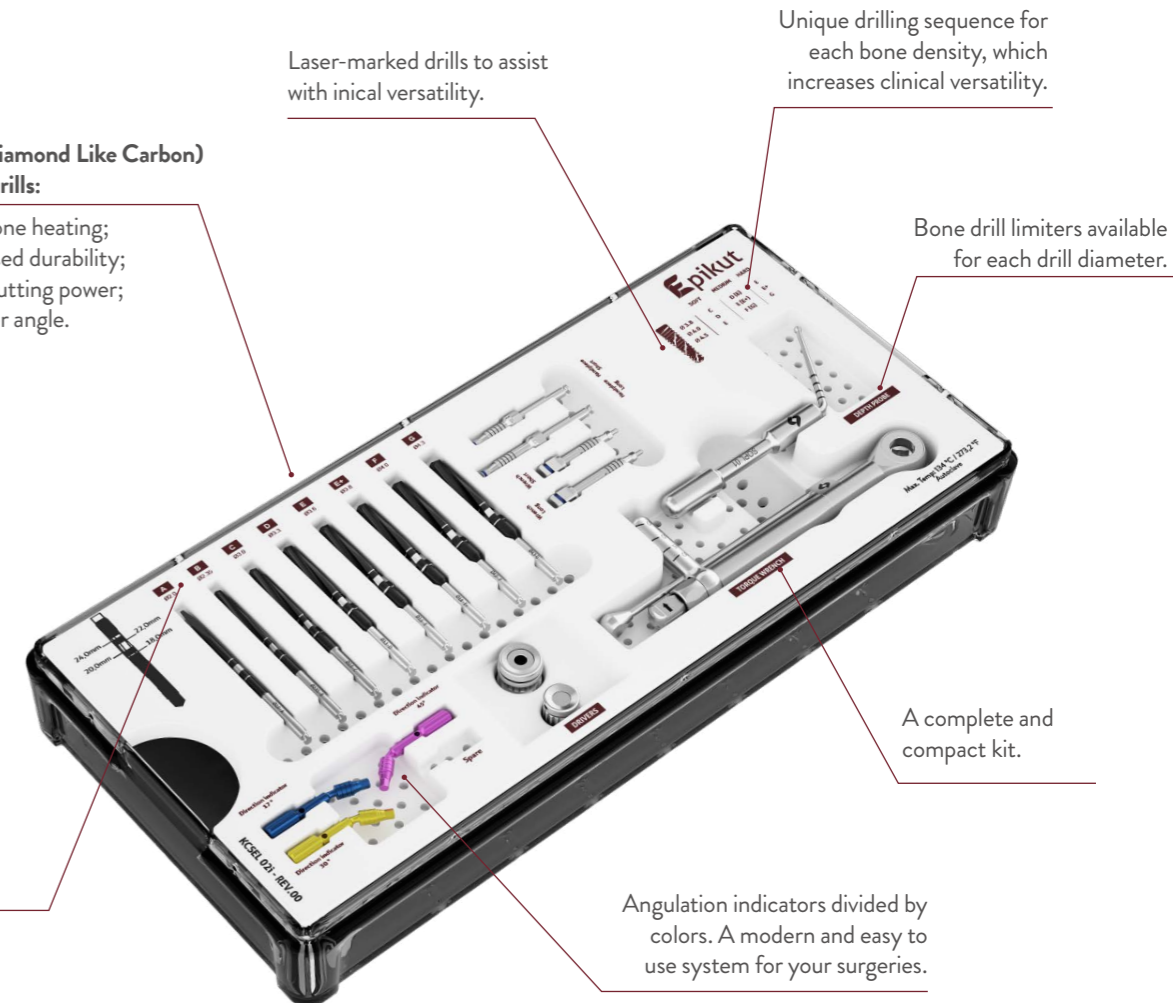
DLC (Diamond Like Carbon) coated drills:

- Less bone heating;
- Increased durability;
- High cutting power;
- Sharper angle.

Laser-marked drills to assist with inical versatility.

Unique drilling sequence for each bone density, which increases clinical versatility.

Bone drill limiters available for each drill diameter.



Intuitive linear sequence.

A complete and compact kit.

Angulation indicators divided by colors. A modern and easy to use system for your surgeries.

KCSEL 02



Get to know Implantat, the educational streaming of S.I.N.

 [implantat.global](https://www.implantat.global)

internacional@sinimplantsystem.com
www.sinimplantsystem.com

Visit our social networks



[@sinimplantglobal](https://www.instagram.com/sinimplantglobal)



[@sinimplantglobal](https://www.facebook.com/sinimplantglobal)



[S.I.N. Implant System](https://www.youtube.com/S.I.N.ImplantSystem)



[/sin_implant](https://www.tiktok.com/@sin_implant)