



Patient guide



Find out more about S.I.N.
and how to take care of your
dental health by accessing
the QR-Code on the side.





S.I.N.

Solutions + Innovations = New Smiles

Index

Smiles that connect us to our best selves	05
What are Dental Implants?	06
Main Benefits of Dental Implants	08
The Step by Step to a Perfect Smile!	09
Care and maintenance	10
7 Frequently Asked Questions About Dental Implants!	11
Why Choose S.I.N.?	12
Does your dentist use implants — or s.i.N. Implants?	13
Our differentials	13
Real stories of people who rediscovered their smiles with S.I.N. Solutions	14



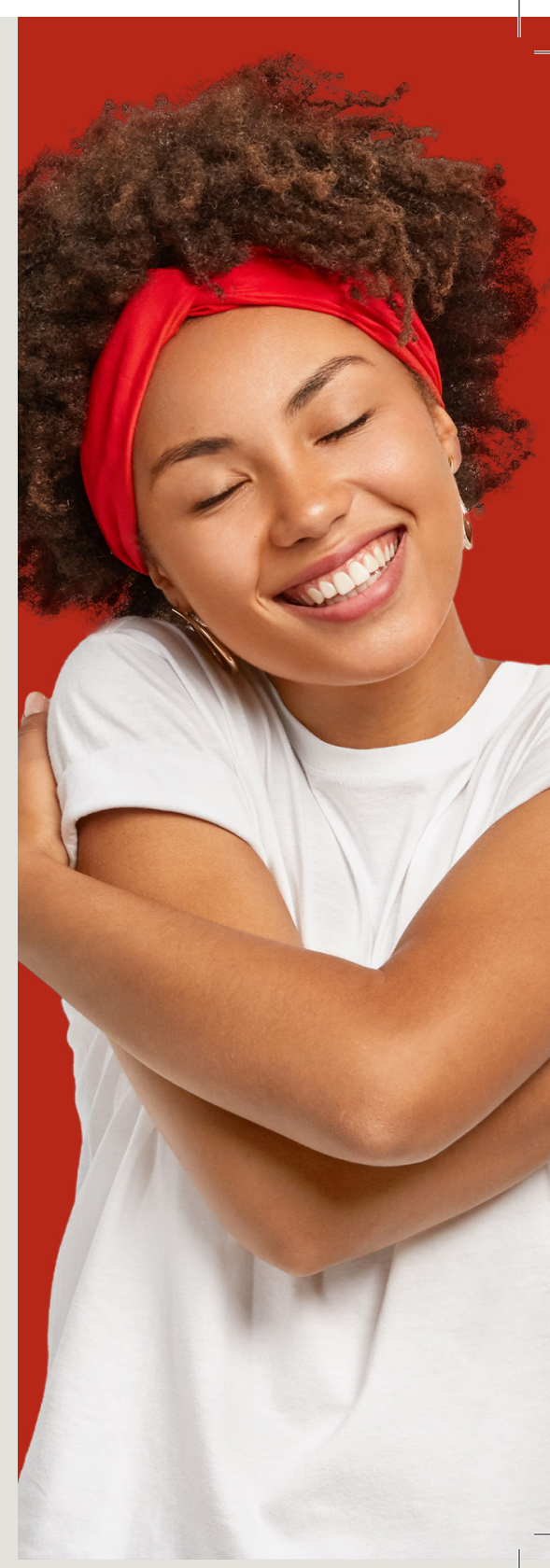
Smiles that connect us to our best selves

A smile is often associated with happiness — one of the most natural and spontaneous human expressions. It reflects the best of what we feel. The pursuit of happiness drives the world forward, giving meaning to small moments and purpose to our growth.

Smiling may seem simple, yet it goes far beyond what we imagine. True happiness lives in the little things — in everyday moments shared with others — and it becomes even more special when it is shared.

Taking care of oral health is one of the first steps to ensure that happiness. Healthy teeth are essential for self-esteem, confidence, and well-being. When you invest in your smile, you also invest in the quality of the moments you share with those around you.

Thanks to advances in modern dentistry, **dental implants** have become a reliable way to restore both the aesthetics and function of your smile, allowing you to experience life with more confidence and joy.



What are dental implants?

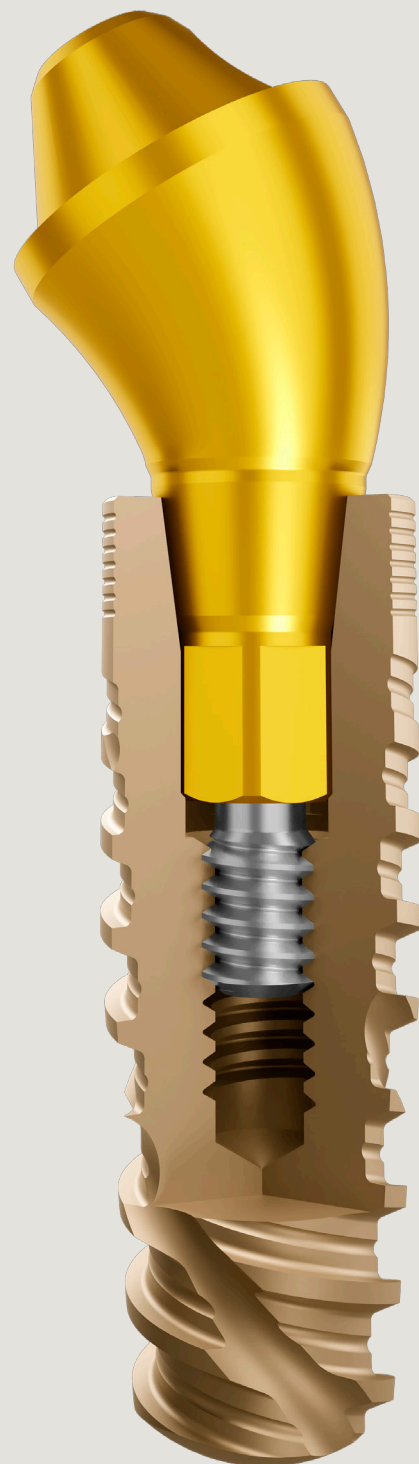
Dental implants are artificial structures designed to replace the root of a missing tooth. Made from titanium — a biocompatible and durable material — they are placed directly into the jawbone or upper jaw and serve as a base for crowns, bridges, or dentures.

One of their main advantages is **osseointegration**, a biological process in which the titanium fuses with the bone, creating a strong and stable foundation for dental restoration.

This treatment restores chewing function, improves speech, and enhances the appearance of the smile. It provides stability and comfort similar to natural teeth, while helping preserve bone structure and facial harmony.

Dental implants are a modern and effective option for single, partial, or total tooth loss.

Tooth loss can affect both function and self-confidence, but there are several treatment options available. Speak with your dentist to find the solution that best fits your needs.



Main benefits of dental implant treatment:

Restored masticatory function

Dental implants ensure efficient and comfortable chewing.

Aesthetic improvement

By integrating naturally with the bone, they provide a beautiful, natural-looking smile.

Preserved bone structure

They help prevent bone resorption, maintaining facial structure and harmony.

Durability and reliability

A long-lasting and secure solution for tooth replacement.


Comfort and safety

Firmly fixed in the jaw, they offer comfort and confidence similar to natural teeth.

Self-esteem

A restored smile and full function can greatly increase confidence and quality of life.





The step by step to a perfect smile!

From the first consultation to post-surgical care, each step of the process is essential to ensure excellent results, smooth recovery, and lasting confidence in your smile.

Evaluation and diagnosis

Your dentist will assess your oral and general health and may request complementary exams such as X-rays, blood tests, or CT scans. Based on this evaluation, a personalized treatment plan will be created.

Implant placement

During surgery, one or more implants are placed into the jawbone under local anaesthesia. In some cases, a temporary crown may be fitted immediately and replaced later by the final crown once full healing has occurred.

Healing period

The healing time usually ranges from 90 days to a few months, depending on each case. During this phase, osseointegration occurs — the process in which the implant fuses with the bone, forming a solid and stable base for the prosthesis.

Final crown placement

After osseointegration, the dental crown — the visible part of the implant — is placed. It is custom-made to perfectly match your smile and bite.

Care and maintenance

Your dentist will provide specific post-operative instructions. Following these recommendations carefully is key to a successful recovery and long-term results.

In the First days

- Apply cold compresses to reduce swelling.
- Eat soft, cool foods.
- Take prescribed medications as directed.

Avoid

- Hard or very hot foods.
- Intense physical activity.
- Smoking, as it may delay healing.

Remember:

Implant treatment does not end with the placement of the prosthesis — continuous care and hygiene are essential for its durability.

- **ORAL HYGIENE:**
Brush and floss regularly.
- **REGULAR CHECK-UPS:**
Visit your dentist periodically for maintenance.
- **AVOID SMOKING:**
Tobacco can compromise healing and implant stability.



Tip

Just like natural teeth, implants require daily care to ensure their durability throughout life!

7 Frequently asked questions about dental implants

“Does getting a dental implant hurt?”

No. With local anaesthesia and modern techniques, the procedure is painless and recovery is comfortable.

“How long does the surgery take?”

On average, the procedure takes 20 to 30 minutes per implant, depending on each patient's specific case.

“Can people who have worn dentures for years get implants?”

Yes. Implants can significantly improve comfort, speech, chewing ability, and self-esteem.

“What about maintenance?”

Follow your dentist's recommendations, maintain good oral hygiene, and attend regular check-ups. Avoid smoking to ensure long-term success.

“Are there any contraindications?”

Yes, in cases such as

- Smoking more than 20 cigarettes a day;
- Bone metabolism disorders;
- Ongoing or frequent radiotherapy or chemotherapy treatments.

“Do dental implants wear out quickly?”

No. With proper care, they can last for many years — often a lifetime.

“Can anyone get dental implants?”

Yes, provided they are in good general health and have sufficient bone structure.

Still have questions about dental implants?

Talk to your dentist.

Why choose S.I.N.?

Since 2003, **S.I.N.** has been a global company dedicated to improving people's lives and self-confidence. As one of the largest manufacturers of dental implants, prosthetic components, and surgical kits, we combine advanced technology with evidence-based practices to deliver superior quality.

Solutions + Innovations = New Smiles

Present in more than 30 countries, we also offer **S.I.N. Solutions** — innovative digital tools designed to enhance dental treatments and results.

Our mission goes beyond manufacturing implants. We are committed to restoring confidence and self-esteem to thousands of smiles worldwide — because we believe that **smiles create more smiles.**



Watch the video of the Tour of the Fantastic Smile Factory



Does your dentist use implants or S.I.N.?

When your dentist chooses **S.I.N.**, it's because they trust in our quality, innovation, and proven results. With advanced technology and scientific expertise, we ensure a safe and effective treatment for every patient.

After all, we are specialists in creating smiles.

Those who seek quality and innovation choose **S.I.N.**

Ask your dentist to use S.I.N. innovative solutions throughout your treatment.

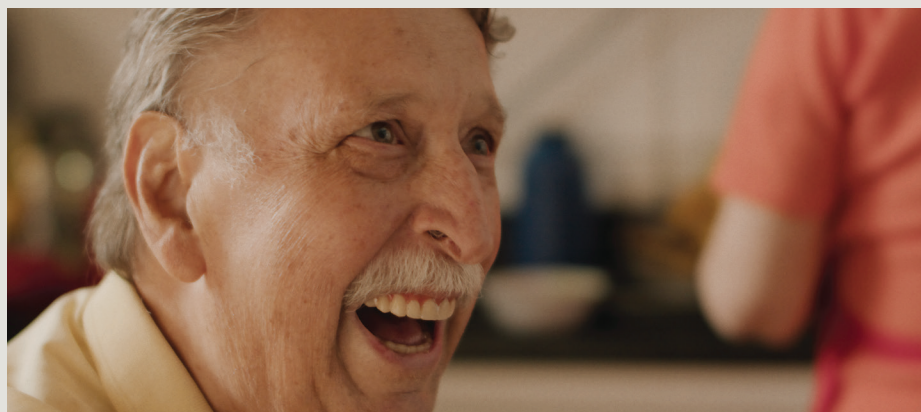
Our differentials

- Over 20 years of experience creating smiles in Brazil and around the world.
- Innovative technology and advanced digital solutions.
- Strict quality control and scientific validation.
- **Lifetime warranty** on implants and **5-year warranty** on prosthetic components.
- Present in over 30 countries, helping thousands of patients smile again.



Real stories of people who rediscovered their smiles with S.I.N. Solutions

Scan the QR code with your mobile phone to
watch our exclusive web series.





Visit our social networks



/sinimplantglobal



/SINImplantSystem



/sinimplantsystem



@sinimplantsystemglobal

www.SINIMPLANTSYSTEM.com