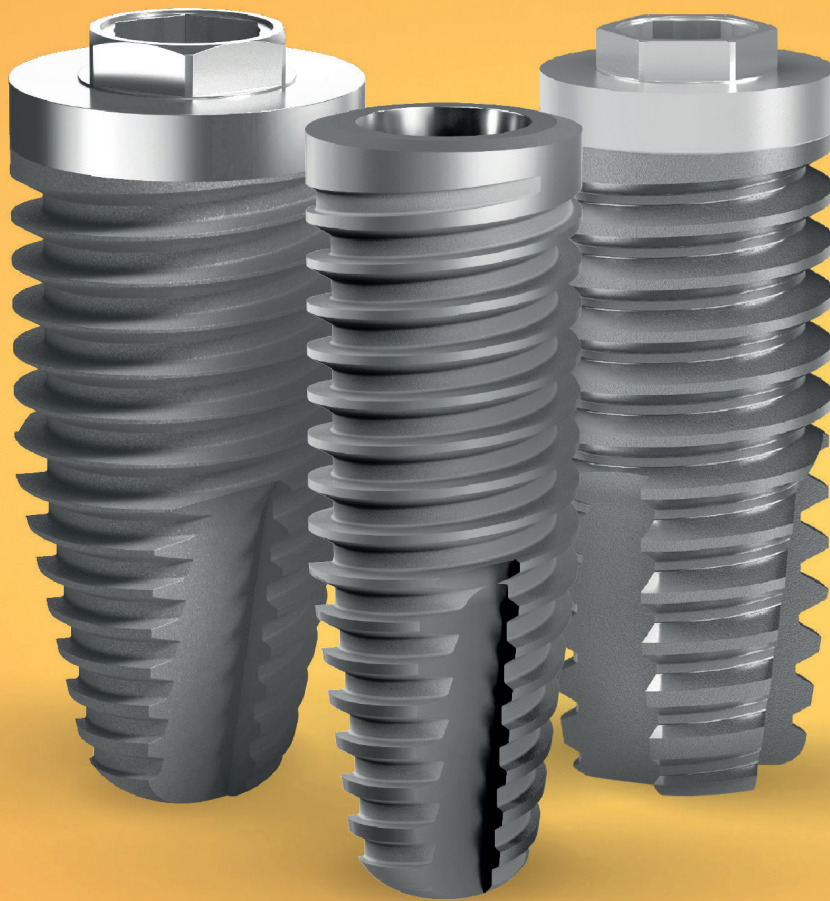


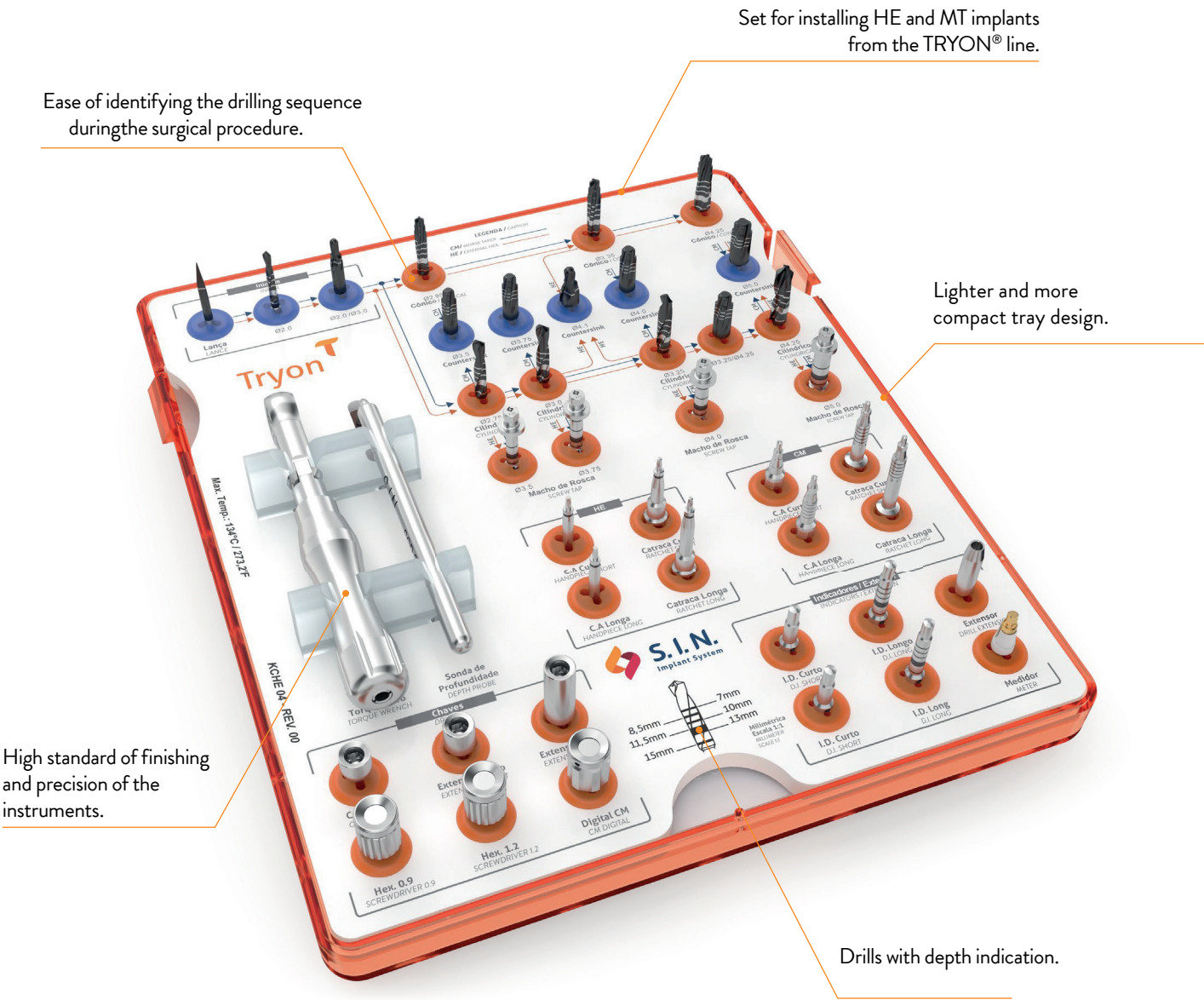
Tryon

The simplicity of a classic



TRYON SURGICAL KIT

SIMPLICITY AND MAXIMUM
FUNCTIONALITY FOR YOUR SURGERIES



PRODUCT CODE: KCHE 04
ORGANIZER BOX CODE: COHE 04

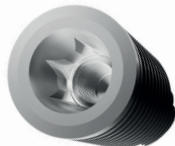
Tryon^T

The simplicity of a classic

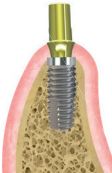
TRYON® is S.I.N. classic implant. The TRYON® External Hex implant system was developed based on the concept introduced by the greatest name in global implant dentistry: Professor Per-Ingvar Brånemark.

Following the evolution of implant dentistry, TRYON® features the External Hexagon connection and also Morse Taper, both with double acid etching and macrogeometry that ensures high primary stability, efficiency, and safety in your surgeries.

With over 10 years in the market, TRYON® is an implant with extensive scientific documentation and has contributed to creating more than 3.000,000 smiles worldwide.



- › External Hexagon and Morse Taper connection.
- › Manufactured in Commercially Pure Titanium (Grade 4): an extremely lightweight metal, highly resistant to corrosion, wear, and fracture.



- › Compatible with the 3.6 FIT line: allows the use of Platform Switching for the HE line, benefiting aesthetic and anterior areas, reducing the risk of bone loss and microgaps.



- › Surface treated with double acid etching: ideal roughness that provides secure osseointegration.



- › Mainly indicated for full-arch rehabilitations or multiple prostheses.



- › Wide variety of prosthetic components.



- › It features an external thread with variable body diameter and platforms of 3.5, 3.75, 4.0, 4.1, and 5.0 mm, providing fast insertion and reduced trauma.
- › Installation performed with internal torque and without a mount.



- › Excellent Cost-Benefit.



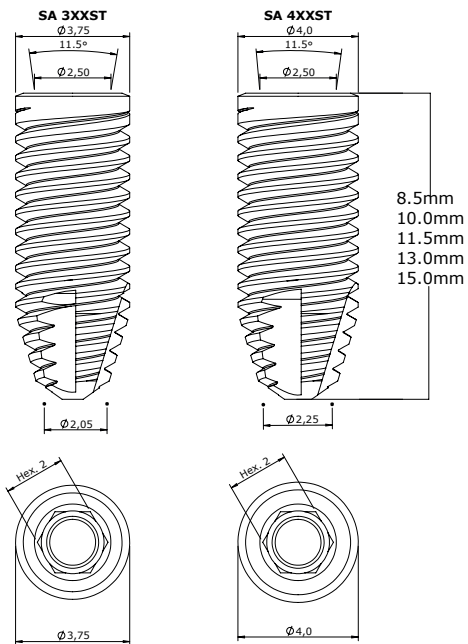
- › High stability in the bone tissue.



- › Two wrench options for installation (contra-angle and ratchet).



Technical Measures TRYON® SAT CYLINDRICAL MORSE TAPER

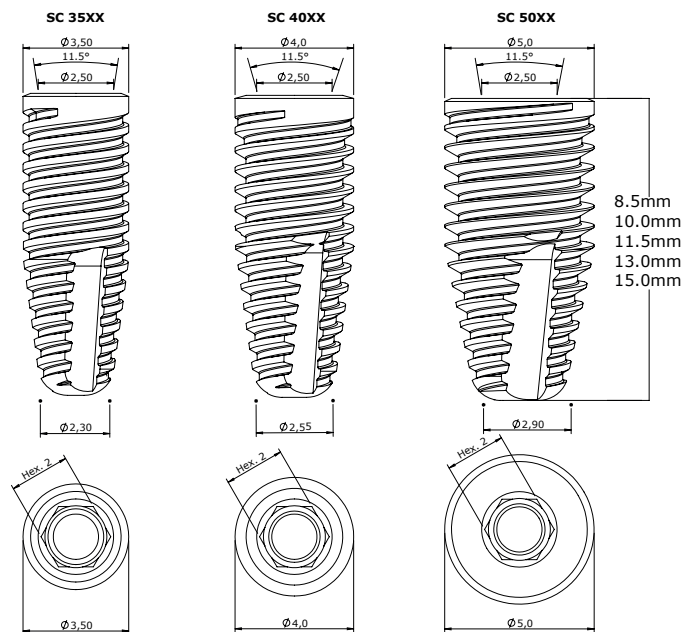


- › Indicated for bone types III and IV.
- › Installation 1.5 mm subcrestal is recommended.
- › Maximum surgical torque: 80 N·cm.
- › Drills (Lance and Helical): 1500 rpm
- › Drills (Pilot and Countersink): 800 rpm
- › Compatible with 11.5° Morse Taper components.

CLINICAL USE INDICATIONS:

- › 3,75 mm - Central incisors, lateral incisors, and canines.
- › 4,0 mm - Canines, premolars, and molars.

Technical Measures TRYON® SC CONICAL MORSE TAPER

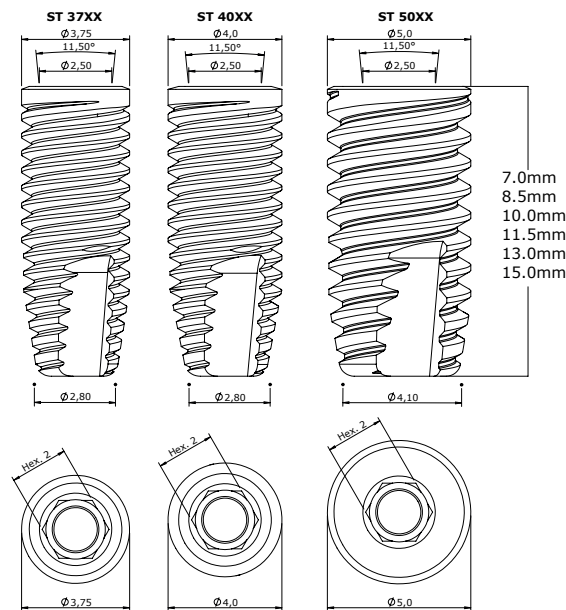


- › Indicated for bone types III and IV.
- › Installation 1.5 mm subcrestal is recommended.
- › Maximum surgical torque: 80 N·cm.
- › Drills (Lance and Helical*): 1,500 rpm.
- › Drills (Pilot and Countersink): 800 rpm.
- › Compatible with 11.5° Morse Taper components.

CLINICAL USE INDICATIONS:

- › 3,75 mm - Central incisors, lateral incisors, and canines.
- › 4,0 mm - Canines, premolars, and molars.
- › 5,0 mm -Molars.

Technical Measures TRYON® ST CYLINDRICAL MORSE TAPER



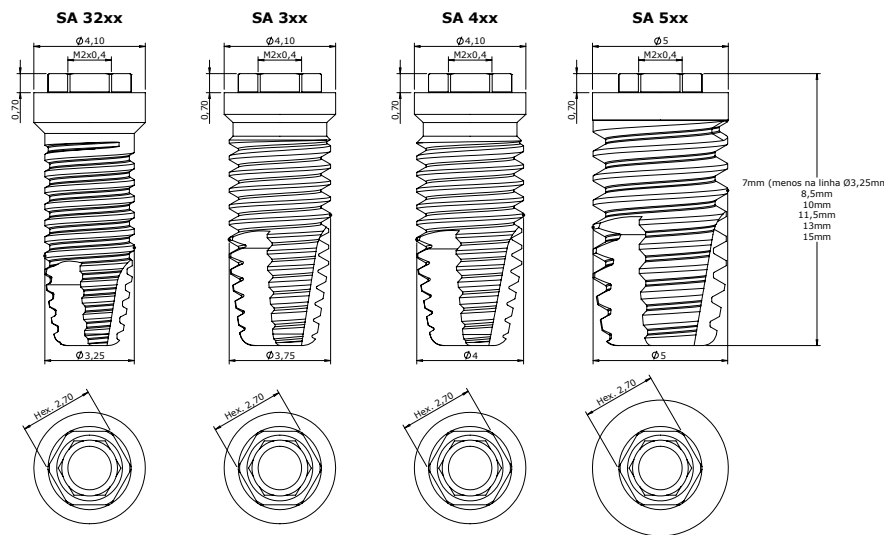
- › Indicated for bone types I and II.
- › Installation 1.5 mm subcrestal is recommended.
- › Maximum surgical torque: 80 N·cm.
- › Drills (Lance and Helical*): 1500 rpm.
- › Drills (Pilot and Countersink): 800 rpm.
- › Compatible with 11.5° Morse Taper components.

*Except for the FHTD 4215 helical drill, for which the recommended speed is 800 rpm.

CLINICAL USE INDICATIONS:

- › 3,75 mm - IMaxillary central and lateral incisors, canines, and premolars
- › 4,0 mm - Canines, premolars, and molars
- › 5,0 mm - Molars

Technical Measures TRYON® CY CYLINDRICAL EXTERNAL HEXAGON



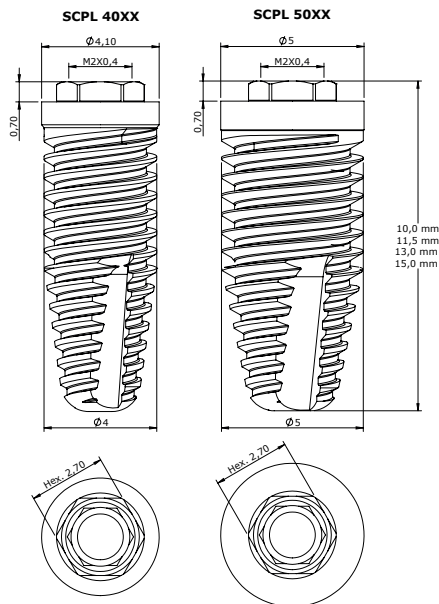
- › Indicated for bone types I and II.
- › Installation at bone level.
- › Insertion rotation: 20 rpm.
- › Maximum surgical torque: 80 N·cm.
- › Drills (Lance and Helical*): 1,500 rpm
- › Drills (Pilot and Countersink): 800 rpm

*Except for the FHTD 4215 helical drill, for which the recommended speed is 800 rpm.

CLINICAL USE INDICATIONS:

- › 3,25 mm - Lateral incisors and mandibular central incisors.
- › 3,75 mm - Maxillary central and lateral incisors, canines, and premolars
- › 4,0 mm - Maxillary central incisors, canines, premolars, and molars
- › 5,0 mm - Molars

Technical Measures TRYON® CO CONICAL EXTERNAL HEXAGON



- › Indicated for bone types III and IV.
- › Installation at bone level
- › Initial drill rotation: 1500 rpm.
- › Rotação das fresas cônicas: 800 rpm.
- › Maximum surgical torque: 80 N·cm.

CLINICAL USE INDICATIONS:

- › 4,0 mm - Maxillary central incisors, canines, premolars, and molars
- › 5,0 mm - Molars



S.I.N.

Get to know Implantat, the educational streaming of S.I.N.



implantat.com.br

internacional@sinimplantsystem.com
www.sinimplantsystem.com

Visit our social media:



[@sinimplantglobal](https://www.instagram.com/sinimplantglobal)



[@sinimplantglobal](https://www.facebook.com/sinimplantglobal)



[S.I.N. Implant System](https://www.youtube.com/S.I.N.ImplantSystem)



[/sin_implant](https://www.tiktok.com/@sin_implant)