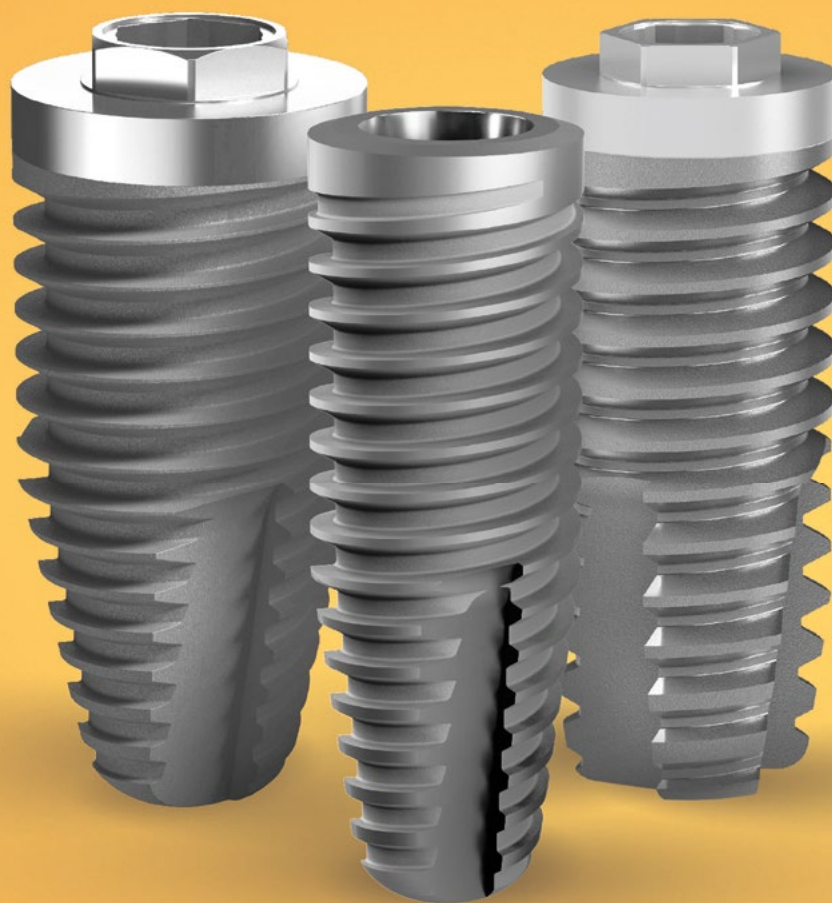


Tryon

The simplicity of a classic



S.I.N.
Implant System

Tryon^T

The simplicity of a classic

TRYON® is the classic S.I.N. implant. The TRYON® External Hexagon implant system was developed considering the concept of the world's greatest mind in implant dentistry: Professor Per-Ingvar Brånemark.

Following the evolution of implant dentistry, TRYON® features the External Hexagon connection and also Morse Taper, both with double acid etching and macrogeometry that ensures high primary stability, efficiency, and safety in your surgeries.

With over 10 years in the market, TRYON® is an implant with extensive scientific documentation and has contributed to creating more than 3,000,000 smiles worldwide.



- › External Hexagonal and Morse Taper connection.
- › Produced of Grade 4 Commercially Pure Titanium (Ticp): Light metal, very resistant to corrosion, wear, and fracture.



- › Suitable with the 3.6 FIT line: Enables the use of Platform Switching for the EH line, improving aesthetic and anterior areas, reducing the risk of bone loss and microgaps.



- › Double acid etching surface treated: ideal roughness that provides safe osseointegration.



- › Mainly indicated for Hybrid Denture or multiple.



- › Important variety of prosthetic components.



- › It features an external thread with varied structure and platform with diameters of 3.5; 3.75; 4.0; 4.1 and 5.0 mm: providing quick insertion and fewer traumas.
- › Placement is done with internal torque and without an assembler.



- › Excellent Cost-Benefit.



- › High stability in bone tissue.



- › 2 driver options for placement (counter-angle and ratchet).

TRYON SURGICAL KIT

SIMPLICITY AND MAXIMUM FUNCTIONALITY FOR YOUR SURGERIES

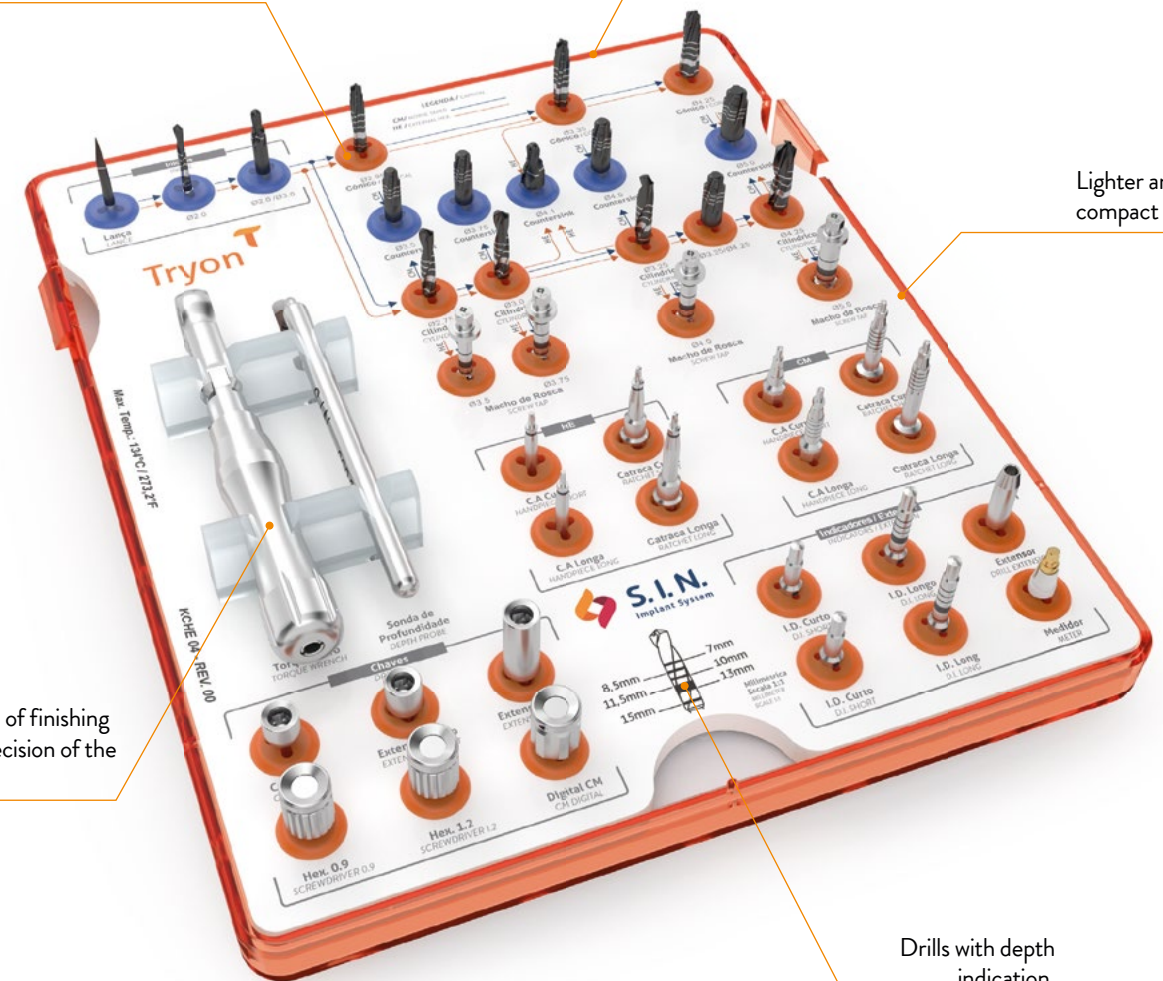
Easy to identify the drilling commands during the surgical act.

Placement set fits External Hex implants for TRYON® and Revolution Lines (except Compact)..

Lighter and more compact tray design.

High standard of finishing details and precision of the instruments.

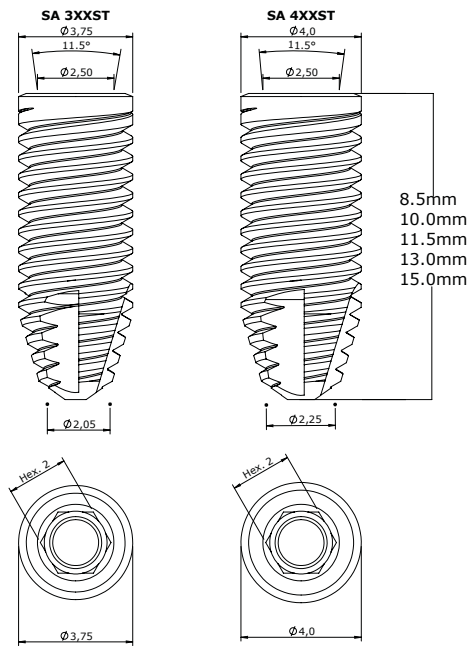
Drills with depth indication.



PRODUCT CODE: KCHE 04

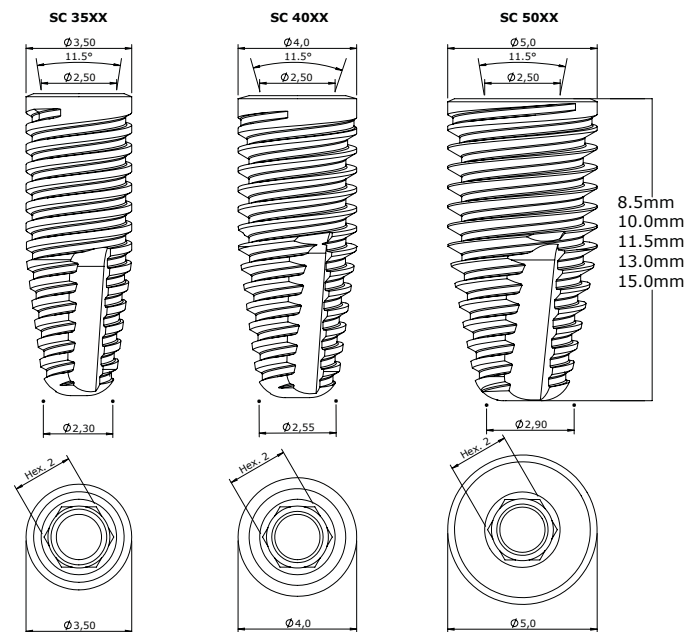
Tryon

Technical Measures TRYON® SAT CYLINDRICAL MORSE TAPER



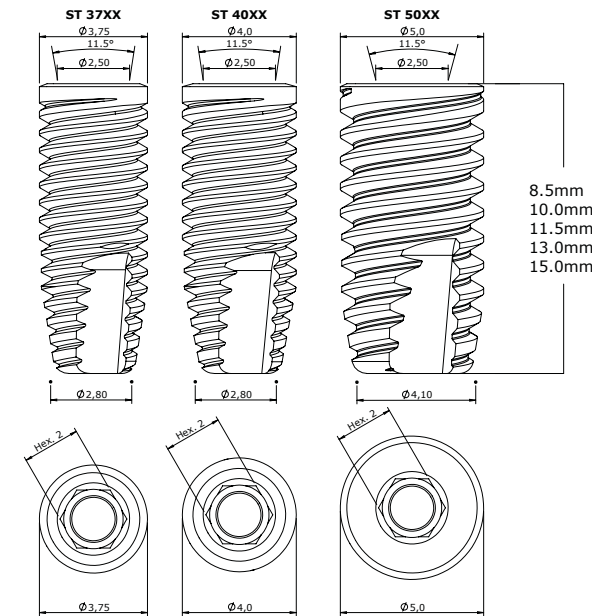
- › Indicated for bones types III and IV.
- › 1.5mms infra-bone placement is recommended.
- › Maximum torque in surgery: 80N.cm.
- › Drills (Lance and Helicoidal): speed 1500 rpm.
- › Drills (Pilot and Countersink): speed 800 rpm.
- › Compatible with 11,5° Morse Taper components.

Technical Measures TRYON® SC CONICAL MORSE TAPER



- › Indicated for bones types III and IV.
- › 1.5mms infra-bone placement is recommended.
- › Maximum torque in surgery: 80N.cm.
- › Drills (Lance and Helicoidal): speed 1500 rpm.
- › Drills (Pilot and Countersink): speed 800 rpm.
- › Compatible with 11,5° Morse Taper components.

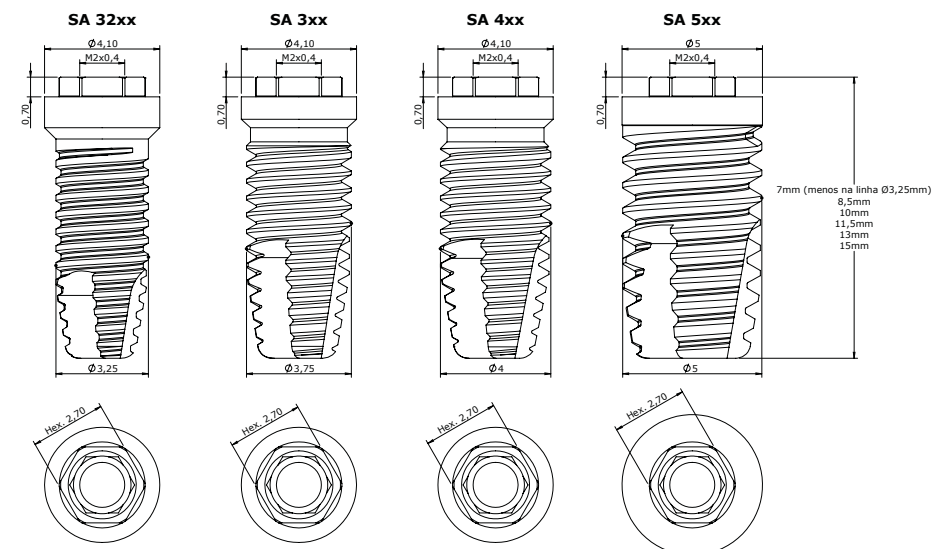
Technical Measures TRYON® ST CYLINDRICAL MORSE TAPER



- › Indicated for bones types I and II.
- › 1.5mms infra-bone placement is recommended.
- › Maximum torque in surgery: 80N.cm.
- › Drills (Lance and Helicoidal*): speed 1500 rpm.
- › Drills (Pilot and Countersink): speed 800 rpm.
- › Compatible with 11.5° Morse Taper components.

*The suggested drilling speed is 800 rpm, except for helicoidal drill FHTD 4215.

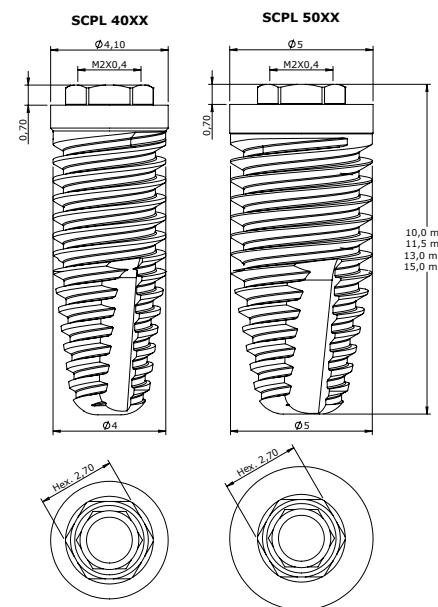
Technical Measures TRYON® CY CYLINDRICAL EXTERNAL HEXAGON



- › Indicated for bones types I and II.
- › Infra-bone placement.
- › Rotational insertion: 20 rpm.
- › Maximum torque in surgery: 80N.cm.
- › Drills (Lance and Helicoidal*): speed 1500 rpm.
- › Drills (Pilot and Countersink): speed 800 rpm.

*The suggested drilling speed is 800 rpm, except for helicoidal drill FHTD 4215.

Technical Measures TRYON® CO CONICAL EXTERNAL HEXAGON



- › Indicated for bones types III and IV.
- › Infra-bone placement.
- › Drills (Lance and Helicoidal): speed 1500 rpm.
- › Drills (Pilot and Countersink): speed 800 rpm.
- › Maximum torque in surgery: 80N.cm.



Visit Implantat, S.I.N. Implant System's educational space.

 **implantat.com.br**

0800 770 8290 (BR) | +351 214 120 336 (PT)

www.sinimplantsystem.com

Visit our social networks:

 fb.com/sinimplantsystem

 @sinimplantglobal

 S.I.N. Implant System