

# Guided<sup>®</sup> Surgery



**S.I.N.**  
Implant System

The S.I.N. Guided Surgery Kits have been developed with the highest technological innovation and outstanding industrial quality and offer countless advantages in dental implantation.

Now you can offer your patients surgeries with more comfort, extreme precision, and a reduction in surgical time, favoring postoperative recovery.

Discover the best that the field of implantology has to offer!

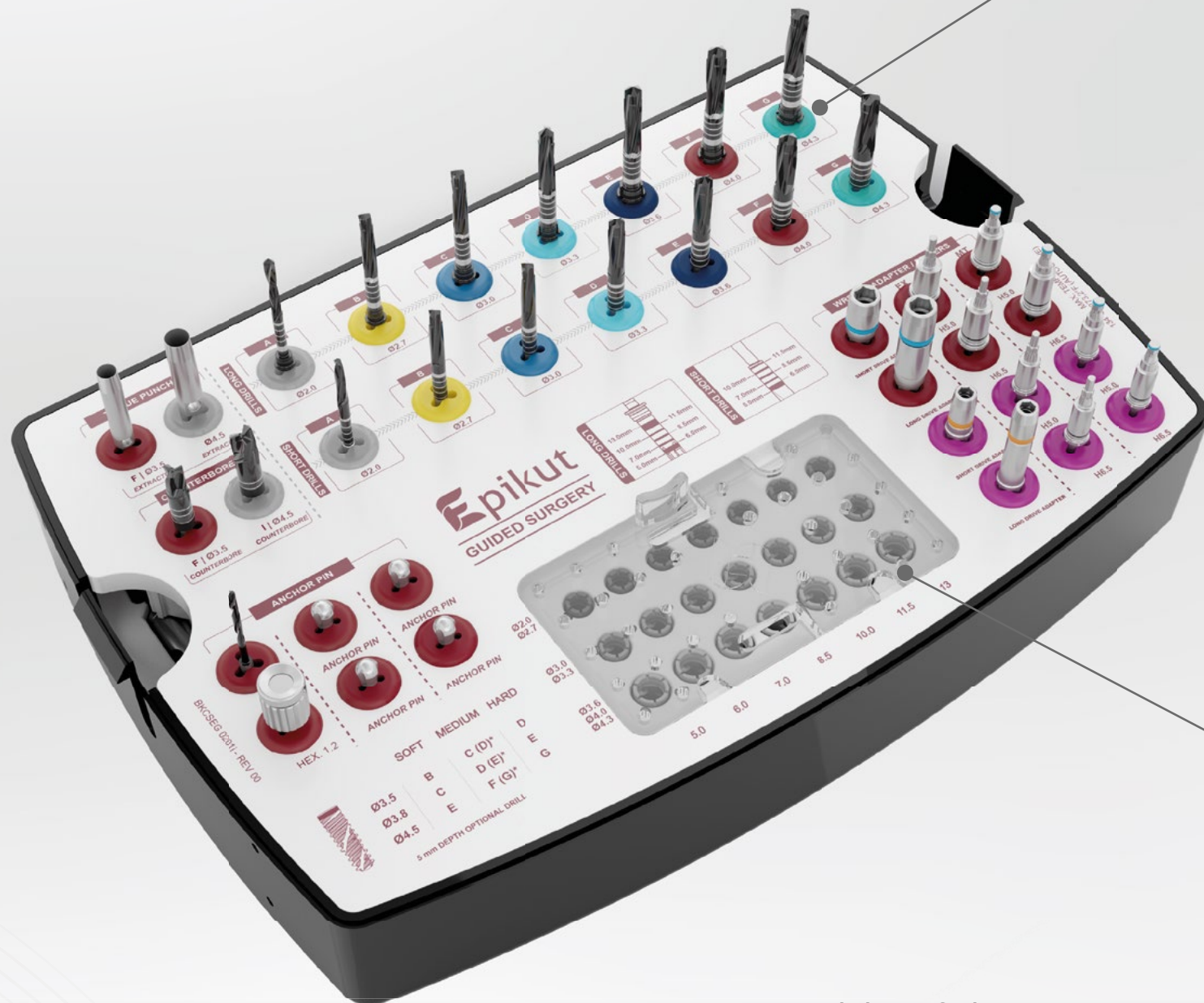
# Guided Surgery





# These kits are compact and complete

A single kit contains everything you need for your surgery.



Possibility of placement in various diameters\*, lengths, and prosthetic platforms.

\*except Unitite Compact (diam of 5 and 6mm)



## Color-coding

Modern and easy-to-identify system.



## Integrated Safe Drill System

Limiters that allow exact control of the depth of the alveolus.



# With the Guided Surgery technique, you obtain:

## Narrow ring system

Avoids collision between the surgical guide drill stops and orientation mistakes at small mesiodistal distances.



## Flexible drill stops positioning system

Allows the surgical guides to be placed in two positions according to the bone level.

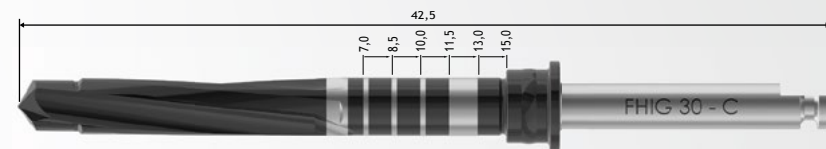


## Long and short drills system

A greater variety of options according to the clinical case.

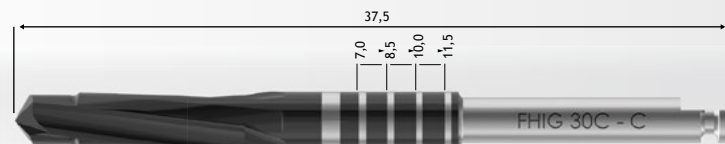
Standard drill: 42,5mm.

- Laser depth markings;
- Safe Drill;
- Recommended for all types of procedures.



Short drills: 37,5mm;

- Recommended for patients with small buccal opening / posterior regions;
- Allows placement of 7 mm/8.5 mm/ 10.0 mm/ 11.5 mm implants\*\*;
- Does not fit a Safe Drill limiter.



Possibility of immediate prosthesis placement through digital flow;



Predictability and accuracy in planning;



Shorter surgical time due to greater precision in implant placement.



High survival rate of the implants;



Better soft tissue maintenance;



Greater postoperative comfort;



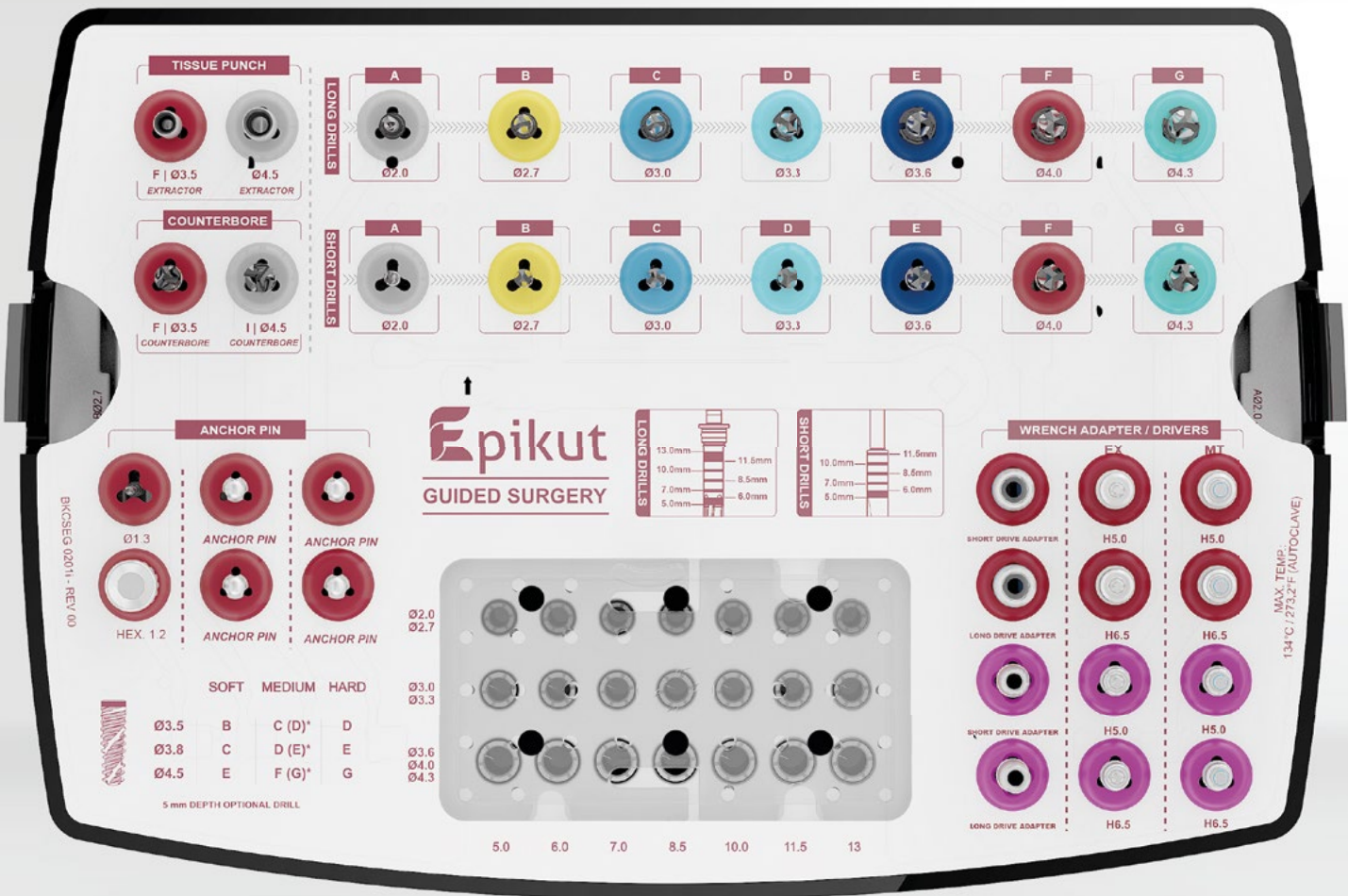
Preservation of the bone tissue volume around the implant;



Reduced bleeding;



Faster patient recovery



\*\*In the H6.5 condition with short drills, the maximum length of the implant to be placed must be 10.0 mm.



+55 (11) 2169-3000

[www.sinimplantsystem.com](http://www.sinimplantsystem.com)

---

Visit our social networks:



[/sinimplantglobal](https://www.facebook.com/sinimplantglobal)



[@sinimplantglobal](https://www.instagram.com/sinimplantglobal)



[S.I.N. Implant System](https://www.youtube.com/S.I.N.ImplantSystem)